

Bush hammer Head

Features

- 16 Carbide Teeth.
- Monobloc.

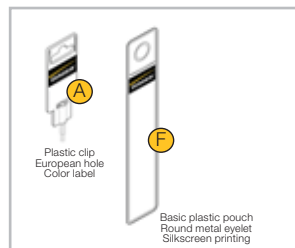
Larg.	Lt	Ref.	Gencod	Qt.
Compatible SDS-max				
45	240	363D16L0045	3336600063723	1

Ref.
363



Applications
For bigger breaking work with an ergonomical angled chisel.

Angled bolster



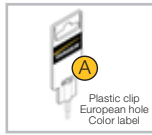
Larg.	Lt	Ref.	Gencod	Qt.	Pack
Compatible SDS-plus					
40	200	348L40L0200	3336600063648	1	A
Compatible SDS-max					
50	300	349L50L0300	3336600063655	1	A
80	80	349L80L0300	3336600185401	1	A
Compatible SDS-top					
40	250	397L40L0250	3336600083110	1	F

348
349
397



Toothed chisel

Applications
To unjoint brick, stone, tiles and roughcast.



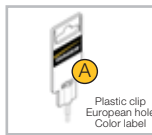
Larg.	Lt	Ref.	Gencod	Qt.
Compatible SDS-max				
38	280	361L40L0280	3336600063662	1

361



Jointed chisel

Applications
To put out the junctions mortar of bricks...



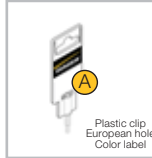
Ep.	Lt	Ref.	Gencod	Qt.
Compatible SDS-max				
10	300	329L10L0300	3336600063679	1

329



Concrete chasing chisel

Applications
To make thick trench on concrete.



Ø	Lt	Ref.	Gencod	Qt.
Compatible SDS-plus				
22	240	311L22L0250	3336600063686	1
Compatible SDS-max				
26	300	312L26L0300	3336600063693	1

311
312



Brick chasing chisel

Applications
For jobs in standstone, stone and brick. Ideal for varying the depth of the channel glides through and digging locations for distribution boxes and sockets without changing tools.



ØxP.	Lt	Ref.	Gencod	Qt.
Compatible SDS-max				
32x23	300	314L32L0300	3336600063709	1
35x36	380	314L35L0380	3336600063716	1

314



Ø 32 Ø 35