

CONCRETE DRILL BIT

INTENSIVE USE

MEGA

Ref.

226

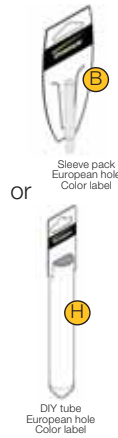


Features

- Carbide tip with semi-positive shaped.
- "U" shaped flute.
- Polished finish.
- Straight shank.

Benefits

- Polish finish with striking appeal permits dust removal.



Sleeve pack
European hole
Color label

DIY tube
European hole
Color label

| Ø | Lu | Lt | Ref. | Gencod | Qt. |
|---------------------|-----|-----|---------------|---------------|-----|
| Short series | | | | | |
| 3 | 20 | 60 | 226D03 | 3336600028296 | 1 |
| 4 | 35 | 75 | 226D04 | 3336600028302 | 1 |
| 5 | 45 | 85 | 226D05 | 3336600028319 | 1 |
| 5,5 | 45 | 85 | 226D05,5 | 3336600028470 | 1 |
| 6 | 60 | 100 | 226D06 | 3336600028326 | 1 |
| 6,5 | 60 | 100 | 226D06,5 | 3336600028487 | 1 |
| 7 | 60 | 100 | 226D07 | 3336600028333 | 1 |
| 8 | 80 | 120 | 226D08 | 3336600028340 | 1 |
| 9 | 80 | 120 | 226D09 | 3336600028357 | 1 |
| 10 | 80 | 120 | 226D10 | 3336600028364 | 1 |
| 11 | 110 | 150 | 226D11 | 3336600028371 | 1 |
| 12 | 110 | 150 | 226D12 | 3336600028388 | 1 |
| 13 | 110 | 150 | 226D13 | 3336600028395 | 1 |
| 14 | 110 | 150 | 226D14 | 3336600028401 | 1 |
| 15 | 110 | 150 | 226D15 | 3336600028418 | 1 |
| 16 | 110 | 150 | 226D16 | 3336600028425 | 1 |
| 18 | 120 | 160 | 226D18 | 3336600028432 | 1 |
| 20 | 120 | 160 | 226D20 | 3336600028449 | 1 |
| 22 | 120 | 160 | 226D22 | 3336600056749 | 1 |
| L150 | | | | | |
| 5 | 110 | 150 | 226D05L0150 | 3336600049062 | 1 |
| 5,5 | 110 | 150 | 226D05,5L0150 | 3336600062719 | 1 |
| 6 | 110 | 150 | 226D06L0150 | 3336600049079 | 1 |
| 8 | 110 | 150 | 226D08L0150 | 3336600049093 | 1 |
| 10 | 110 | 150 | 226D10L0150 | 3336600049116 | 1 |
| L200 | | | | | |
| 6 | 160 | 200 | 226D06L0200 | 3336600062740 | 1 |
| 8 | 160 | 200 | 226D08L0200 | 3336600049123 | 1 |
| 10 | 160 | 200 | 226D10L0200 | 3336600049130 | 1 |
| 12 | 160 | 200 | 226D12L0200 | 3336600049147 | 1 |
| 14 | 160 | 200 | 226D14L0200 | 3336600049154 | 1 |
| 16 | 160 | 200 | 226D16L0200 | 3336600049161 | 1 |
| L400 | | | | | |
| 6 | 360 | 400 | 226D06L0400 | 3336600049178 | 1 |
| 8 | 360 | 400 | 226D08L0400 | 3336600049192 | 1 |
| 10 | 360 | 400 | 226D10L0400 | 3336600049215 | 1 |
| 12 | 360 | 400 | 226D12L0400 | 3336600049239 | 1 |
| 14 | 360 | 400 | 226D14L0400 | 3336600049253 | 1 |
| 16 | 360 | 400 | 226D16L0400 | 3336600049277 | 1 |
| 18 | 360 | 400 | 226D18L0400 | 3336600049284 | 1 |
| 20 | 360 | 400 | 226D20L0400 | 3336600049291 | 1 |



SETS
PAGE
57

211C 256C



Ø Max 12.7

FAST

Pro

264

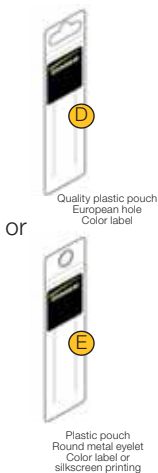


Features

- Carbide tip with semi-positive shaped.
- Double-rolled thread flute with land.
- Polished finish.
- Straight shank.

Benefits

- The head design permits faster drilling.



Quality plastic pouch
European hole
Color label

Plastic pouch
Round metal eyelet
Color label or
silkscreen printing

| Ø | Lu | Lt | Ref. | Gencod | Qt. |
|---------------------|-----|-----|-------------|---------------|-----|
| Short series | | | | | |
| 3 | 20 | 60 | 264D03 | 3336600056060 | 1 |
| 3,5 | 35 | 75 | 264D03,5 | 3336600056077 | 1 |
| 4 | 45 | 85 | 264D04 | 3336600056084 | 1 |
| 4,5 | 45 | 85 | 264D04,5 | 3336600056091 | 1 |
| 5 | 55 | 95 | 264D05 | 3336600056107 | 1 |
| 5,5 | 60 | 100 | 264D05,5 | 3336600056114 | 1 |
| 6 | 60 | 100 | 264D06 | 3336600056121 | 1 |
| 6,5 | 80 | 100 | 264D06,5 | 3336600056138 | 1 |
| 7 | 80 | 100 | 264D07 | 3336600056145 | 1 |
| 8 | 80 | 120 | 264D08 | 3336600056152 | 1 |
| 9 | 80 | 120 | 264D09 | 3336600056169 | 1 |
| 10 | 80 | 120 | 264D10 | 3336600056176 | 1 |
| 11 | 110 | 150 | 264D11 | 3336600056183 | 1 |
| 12 | 110 | 150 | 264D12 | 3336600056190 | 1 |
| 13 | 110 | 150 | 264D13 | 3336600056206 | 1 |
| 14 | 110 | 150 | 264D14 | 3336600056213 | 1 |
| 16 | 110 | 150 | 264D16 | 3336600056237 | 1 |
| 18 | 120 | 160 | 264D18 | 3336600056244 | 1 |
| 19 | 120 | 160 | 264D19 | 3336600099401 | 1 |
| 20 | 120 | 160 | 264D20 | 3336600056251 | 1 |
| L150 | | | | | |
| 5 | 110 | 150 | 264D05L0150 | 3336600056268 | 1 |
| 6 | 110 | 150 | 264D06L0150 | 3336600056275 | 1 |
| 7 | 110 | 150 | 264D07L0150 | 3336600056282 | 1 |
| 8 | 110 | 150 | 264D08L0150 | 3336600056299 | 1 |
| 10 | 110 | 150 | 264D10L0150 | 3336600056312 | 1 |
| L200 | | | | | |
| 6 | 160 | 200 | 264D06L0200 | 3336600056329 | 1 |
| 8 | 160 | 200 | 264D08L0200 | 3336600056343 | 1 |
| 10 | 160 | 200 | 264D10L0200 | 3336600056350 | 1 |
| 12 | 160 | 200 | 264D12L0200 | 3336600056367 | 1 |
| 14 | 160 | 200 | 264D14L0200 | 3336600056374 | 1 |



SETS
PAGE
57

208D



201C

299B



Ø Max 12.7